



**Package Contents**

- Wireless-G CompactFlash Card
- Setup Wizard CD-ROM with Drivers and User Guide
- Quick Installation guide
- Registration Card

**2.4GHz 802.11g**  
**Wireless-G**  
**CompactFlash Card**  
Quick Installation



# 1 Setting up the PDA

**IMPORTANT: Do not insert the Card into the PDA until instructed to do so or the setup will not work.**

**A** Connect your PDA to your PC. Make sure you have the Microsoft ActiveSync software installed on your PC. Refer to your PDA's documentation for information on Microsoft ActiveSync software.

**B** Insert the Setup CD-ROM into your PC's CD-ROM drive and the screen in Figure B should appear automatically.

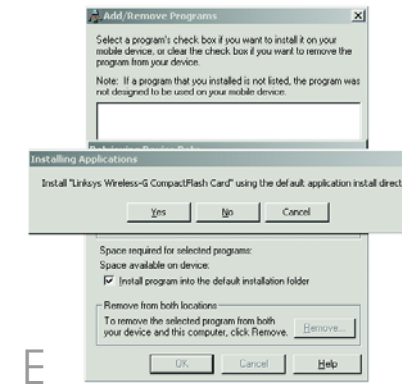
If this screen does not appear automatically, you can access it by clicking the Start button and choosing Run. In the drop-down box, type d:\setup.exe (if "d" is the letter of your CD-ROM drive) and click **OK**.

**C** Click the **Install** button to start the Setup Wizard.

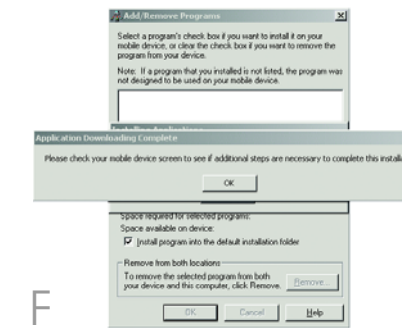
**D** The following screen displays the License Agreement. Read the agreement, then if you agree, click **Next** to continue..



**E** When asked if you want to install the Linksys Wireless-G CompactFlash Card using the default application install directory, (Fig. E) click **Yes** to continue.



**F** When asked to check your mobile device screen to see if additional steps are necessary to complete this installation, click **OK**.



**G** The Congratulations screen will appear when the installation is complete. Click **Exit** to exit the Setup Wizard.



# 2 Installing the CompactFlash Card

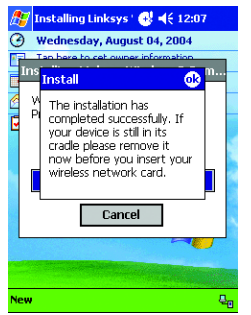
**A** The *Installation has completed successfully* screen will appear on your PDA. Click **OK**,

**B** **Disconnect** the PDA from your PC.

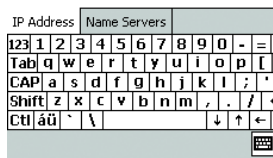
**C** Insert the Wireless-G CompactFlash Card into your PDA in the direction shown in Figure C.

**D** Pocket PC 2002 users will see the screen in Figure D. Click **OK**.

**E** The Wireless Network Monitor icon will appear on the desktop of your PDA.



Use server-assigned IP address  
 Use specific IP address  
 IP address:   
 Subnet mask:   
 Default gateway:

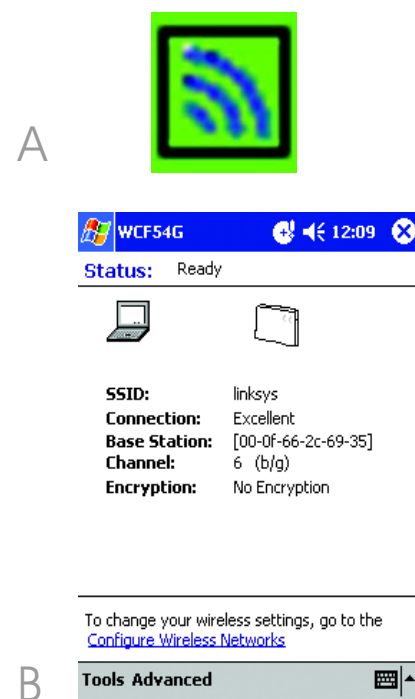


# 3 Connecting to a Wireless Network

**A** To connect to a wireless network, click the Wireless Network Monitor icon at the bottom of your desktop.

**B** The Status screen will appear. Click **Configure Wireless Networks** near the bottom of the screen.

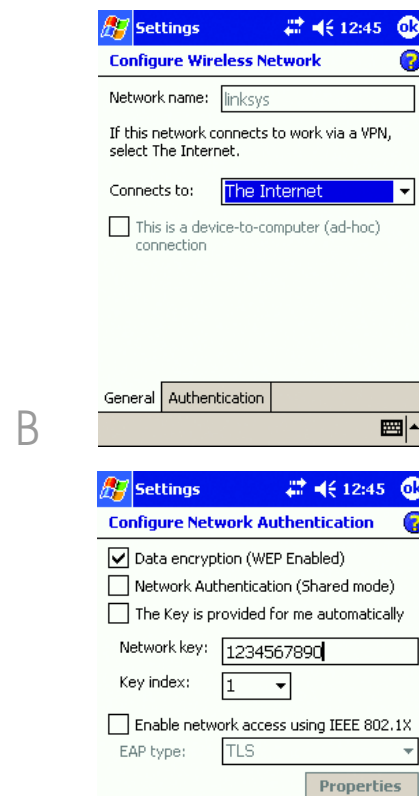
Continue to the section for the Pocket PC operating system that your PDA uses.



**B** On the Settings screen, if your wireless network does not have Wireless Security-WEP, click **OK**, then go to step D.

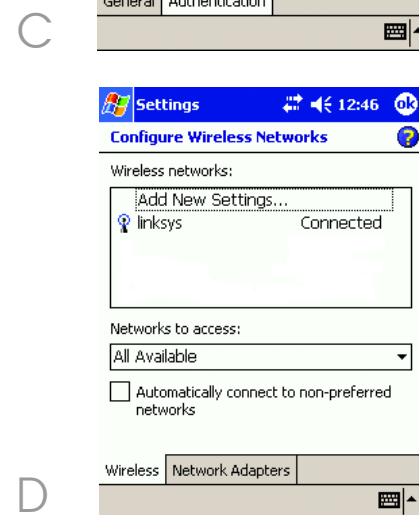
If your wireless network has Wireless Security-WEP, click **Authentication**.

**C** When the screen appears, Check the box for **Data encryption (WEP Enabled)** and uncheck the box for **The Key is provided for me automatically**. Enter the *Network key* in the field and click **OK**.



**D** The next screen will show that the PDA is connected to the wireless network. Click **OK**.

The installation of the Wireless-G CompactFlash Card is complete.

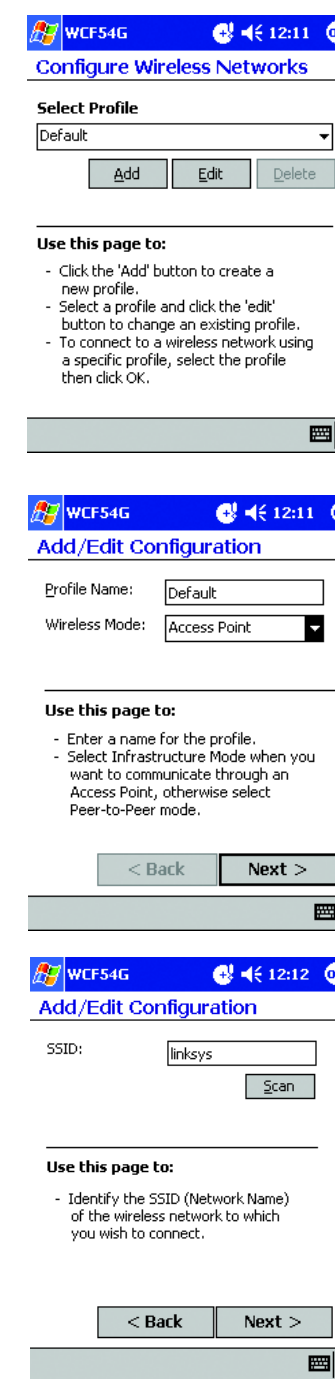


## Pocket PC 2002

**A** Select the default profile and click **Edit**.

**B** Select **Access Point** from the drop-down menu for *Wireless Mode*. Click **Next**.

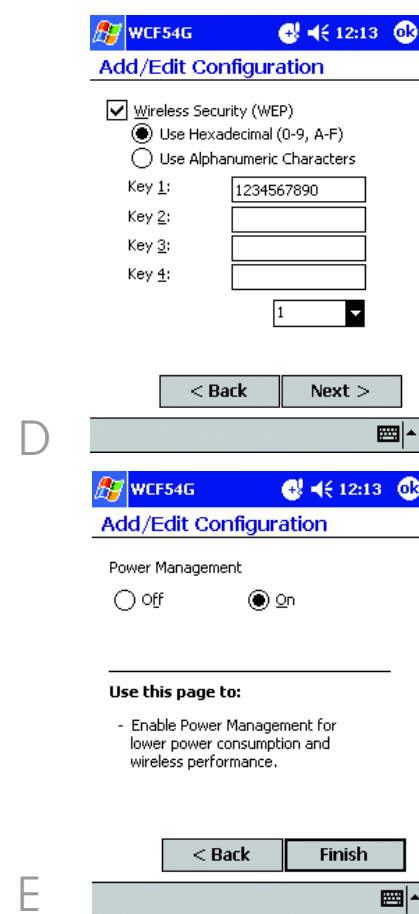
**C** Enter the name of your wireless network in the *SSID* field. You can click **Scan** to search for an existing wireless network name. Click **Next**.



**D** If your wireless network has Wireless Security-WEP, check **Wireless Security (WEP)**. Then select **Use Hexadecimal (0-9, A-F)** and enter the WEP key in a Key field. Click **Next**.

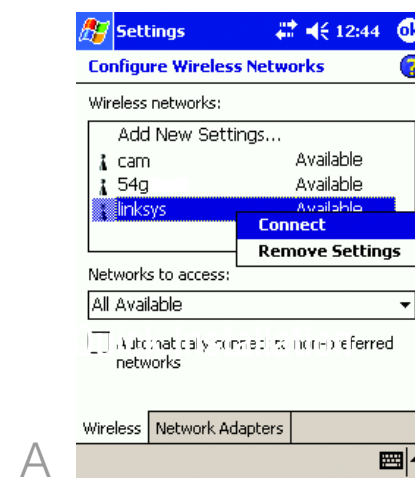
**E** Power Management is a power saving mode. To enable power management, select **On**. Click **Finish**, then you will return to the *Select Profile* screen. Click **OK**.

The installation of the Wireless-G CompactFlash Card is complete.



## Pocket PC 2003

**A** Select your wireless network from the list and click **Connect**.



## LINKSYS®

A Division of Cisco Systems, Inc.

For additional information or troubleshooting help, refer to the User Guide on the Setup CD-ROM. You can also call or email for further support.

**24-hour Technical Support**  
E-mail Support  
Website

**800-326-7114 (toll-free from US or Canada)**  
support@linksys.com  
http://www.linksys.com or  
http://support.linksys.com  
**RMA (Return Merchandise Authorization)**  
FTP Site  
Sales Information

Linksys is a registered trademark or trademark of Cisco Systems, Inc. and/or its affiliates in the U.S. and certain other countries. Copyright © 2004 Cisco Systems, Inc. All rights reserved.